

# CNOE Front Cover Installation



You received an early production NR&D CNOE module which does not have an enclosed front. A module front cover is now available and is being supplied to you at no charge. These directions will guide you through the process of installing this cover on your CNOE module.

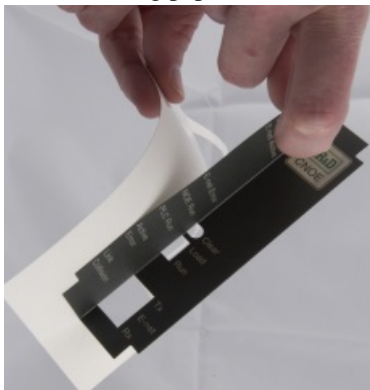


Before beginning, make sure the surface of the module is clean and dry. Wipe with alcohol if necessary to remove any oil.

Begin by bending the cover to an acute angle



Remove backing paper from cover



Including this little strip



Position the notched side of the cover over the numbered holes on the face of the module. Don't let the straight side of the cover contact the side of the module at this time.



Press the cover into place.



Now let the straight side of the cover lay down onto the side of the module.



Smooth the cover down against the side of the module.



The finished result!



For assistance, call NR&D Support at (800)235-6723